



Light-curing coloring pastes

# LITE ART

**Instructions for Use**

**SHOFU INC.**



## INTRODUCTION

Thank you for your purchasing LITE ART. Before use, please read these instructions for use carefully to use it correctly. Kindly keep this manual for your future reference.

LITE ART light curing coloring pastes are designed to recreate the color and characteristics of natural teeth easily. With a newly developed multi-functional monomer and photo initiator, LITE ART shows excellent surface-curing characteristics.

In a very simple way the reproduction of every natural tooth characteristic can be created with a vital appearance during the build-up of light curing C&B composite like SOLIDEX or CERAMAGE.

LITE ART can also be used for a wide range of resins and composites such as artificial teeth (hard resin, acrylic resin) or acrylic resins.

## Contents

<b>1. NOTES</b> .....	P.3
<b>2. NOTES ON USE</b> .....	P.3
<b>3. STORAGE</b> .....	P.4
<b>4. CHARACTERISTICS</b> .....	P.4
<b>5. SYSTEM COMPONENTS</b> .....	P.5
<b>6. INSTRUCTIONS FOR USE</b> .....	P.6
6-1 Product constitution.....	P.6
6-2 Color concept.....	P.6
6-3 Indications.....	P.7
6-4 Basic operating procedure.....	P.7
6-5 Examples for use.....	P.10
<b>7. TECHNICAL DATA</b> .....	P.11

### Contraindications

1. Do not use this material on patients with known allergies to Methacrylate Monomer.
2. Operators with known allergies to Methacrylate Monomer should not use this material.

## 1 NOTES

### 1-1 Notes

1. Use this product in a well ventilated area (ventilated a couple of times per hour).
2. Use a protective mask, which is approved by a public agency and a local vacuum cleaner to avoid harmful influence on human body by powder dust when polishing the prosthesis made while using this material.
3. Do not use this material for any purpose other than specifically outlined in this manual.
4. This product is intended for use by dental professionals only.

### 1-2 Important notes

1. If any inflammation or other allergic reactions occur on patients or operators, immediately discontinue use and seek medical advice.
2. Avoid skin contact with un-polymerized material.
3. Wear protective gloves and glasses to avoid skin or eye contact. If accidental skin contact occurs, immediately blot clean with an alcohol moistened cotton pellet followed by washing with running water. In case of accidental contact with eyes, flush with copious amounts of water and seek medical advice.

### 1-3 Other notes

Instruct patients to clean the restoration daily, because discoloration and plaque formation may occur on the surface of restorations due to eating habits.

## 2 NOTES ON USE

1. Tightly replace the liquid cap immediately after each use.
2. The material dispensed onto the paper pad or dish should be shielded from ambient light by a light shield cover.
3. When using this material, avoid strong direct light such as near a window or just below a dental laboratory light, because the pastes may begin to polymerize.
4. Clean the brush after use with ethyl alcohol or dental brush cleaner.
5. If this material is applied on the surface of the restoration, it may be removed in a short period. Please cover this material by C&B composite resin, like SOLIDEX or CERAMAGE or acrylic resin with inner stain method.

### 3 STORAGE

1. Store in a dark room at temperatures between 1 and 25°C(34-77°F). Avoid high temperatures and high humidity.
2. Keep out of direct sunlight and away from any source of combustion.

### 4 CHARACTERISTICS

#### 4-1 Excellent surface curing characteristics

Newly developed multifunctional monomer and photo initiator give LITE ART excellent curing characteristics. Based on this development, the possibility of an un-polymerized surface layer, which can occur with light-curing resins, is minimized. In case of additional building up, no color heterogeneity or bleed occurs.

#### 4-2 Low viscosity paste for easy brush technique

The COLOR PASTE of LITE ART is low viscosity and shows good handling characteristics for the brush technique. Only one application makes it easy to spread thinly and evenly.

#### 4-3 Wide range of available colors (15)

The shades of the COLOR PASTES are matched up with the SHOFU porcelain stains "VINTAGE Art". These shades are used very often in the laboratories to create a vital appearance. For special shading, SHOFU developed three primary COLOR PASTES, namely C, M and Y (Cyan, Magenta, Yellow). By mixing those shades, it is possible to create various shades.

#### 4-4 Excellent fluorescence

LITE ART are highly fluorescent which match the fluorescence of natural dentition. The natural appearance of the shade is even maintained under artificial light conditions.

#### 4-5 Excellent handling of the syringe

The COLOR PASTE of LITE ART is filled in special syringes which are suitable for easily extruding low viscosity pastes.

### 5 SYSTEM COMPONENTS

#### Set Component

##### LITE ART Full Set

- COLOR PASTE 1mL : 15 colors  
White, Black, Red, A Shade, B Shade, Khaki,  
Orange, Blue Gray, Violet, Orange Brown,  
Dark Red Brown, Black Brown, Cyan, Magenta, Yellow.
- CLEAR LIQUID 6mL : 1 bottle
- UNI BRUSH No.5 : 1 set (handle 1, brush 10)
- Color Card : 1
- Nozzle tip : 15 pcs
- Nozzle cap : 15 pcs



#### Refills

##### COLOR PASTE : 1mL

- 15 colors  
White, Black, Red, A Shade, B Shade, Khaki,  
Orange, Blue Gray, Violet, Orange Brown,  
Dark Red Brown, Black Brown, Cyan, Magenta, Yellow.
- Nozzle tip : 1 pc
- Nozzle cap : 1 pc



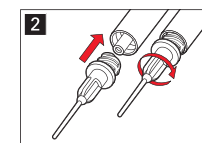
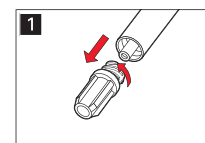
##### CLEAR LIQUID : 6mL



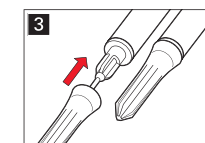
#### Single package of related product

##### UNI BRUSH No.5 (handle 1, brush 10)

#### \*How to use Nozzle Tip and Nozzle Cap



Attach Nozzle Tip securely.



After dispensing, cap with the Nozzle Cap securely.

## 6 INSTRUCTIONS FOR USE

LITE ART stains are designed for the characterization and modification of restorations which are made from C&B composite resin or acrylic resin as well as hard resin teeth or acrylic resin teeth.

### 6-1 Product constitution

#### COLOR PASTE (15 colors)

Low viscosity pastes of light-curing composite resin.

#### CLEAR LIQUID

Special liquid for the adjustment of the viscosity of LITE ART pastes according to the personal preferences.

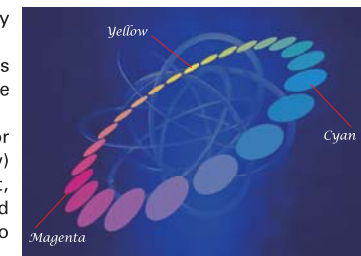
### 6-2 Color concept

The shades of the COLOR PASTEs match up to SHOFU porcelain stains "VINTAGE Art". These shades are used very often in the laboratories to create a vital appearance. For special shading, SHOFU developed three shades of primary COLOR PASTEs - CMY (Cyan, Magenta, Yellow). By mixing these shades, it is possible to create a variety of additional shades.

Color		Use example					
Indication	Code	Shade Adjustment	Cervical	Stain	Incisal	Gum	Color Mixing
White	W			○	○		○
Black	B	○		○			○
Red	R					○	○
A Shade	AS	○	○				
B Shade	BS	○	○				
Khaki	K		○	○			
Orange	O	○	○	○			
Blue Gray	BI-G				○		
Violet	V	○			○	○	
Orange Brown	O-Br		○	○	○		
Dark Red Brown	DR-Br		○	○			
Black Blown	B-Br		○	○			
Cyan	Cyan						○
Magenta	Magenta						○
Yellow	Y						○

### About three primary colors

Red, Yellow and Blue are generally considered to be the three primary colors as they were also stated in classical study of chromatics. However, if they were mixed with each other, there were differences between the mixing ratio and the image of color to be created. And the range of coloration was also limited. Currently, in various fields such as color printing, a subtractive color mixing theory of three primary colors (Cyan, Magenta and Yellow) proposed by Ducos du Hauron in 1868, is used and, as a result, matching of color mixing ratio and image of color to be created became possible, and the range of individual coloration was also expanded.



### 6-3 Indications

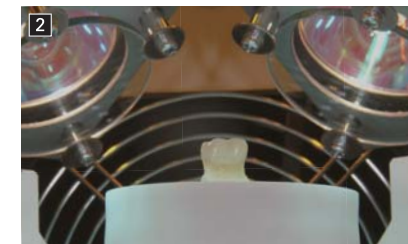
1. Characterization and modification of restorations which are made from C&B composite resin or acrylic resin.
2. Characterization and modification of hard resin teeth or acrylic resin teeth.

### 6-4 Basic operating procedure

#### 1.Shade adjusting CERAMAGE (C&B composite) and occlusal applications



To create an individual occlusal internal effect, Orange or Brown series can be applied thinly with a brush to the center of the occlusal area of the cured body. For interproximal and cervical areas, Shade stains or Khaki can be selected depending on the clinical case.



Light cure for 1 min. using SOLIDILITE V.



Cover the applied surface with incisal or translucent paste of SOLIDEX or CERAMAGE. (This image shows T-Glass.)

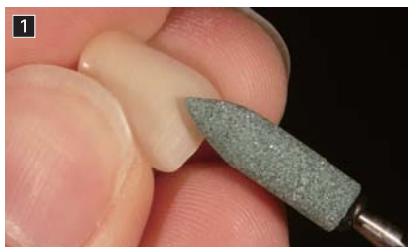


After curing, finish and polish the restoration in the usual manner.

## 6-4 Basic operating procedure

### 2. Shade adjusting of artificial teeth (Hard resin teeth)

Cera Resin Bond has to be used as an adhesive treatment before adjusting the shade of hard resin teeth and acrylic resin teeth.

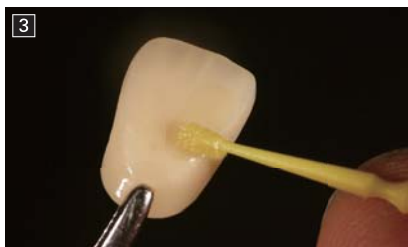


Roughen the surface layer by using carborundum points (Dura-Green).



Remove any dust with a brush or blast it off with oil-free compressed air. Apply Bond I of Cera Resin Bond and leave for 10 sec.

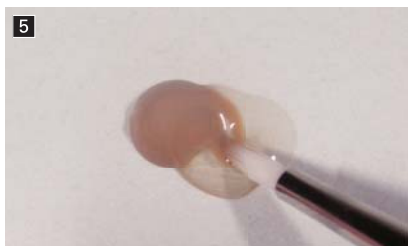
**Note :** DO NOT clean the area with water or a steam cleaner.



Then apply Bond II of Cera Resin Bond and light cure for 3 min. by using SOLIDILITE V.



Apply LITE ART COLOR PASTE (this image shows A-Shade) on the surface and light cure for 1 min. by using SOLIDILITE V.



CLEAR LIQUID can be used for diluting the color or adjusting the viscosity of the pastes.



Cover the applied surface with incisal or translucent paste of SOLIDEX or CERAMAGE. ( this image shows T-Glass.)



After curing, finish and polish the restoration in the usual manner.



## 7 TECHNICAL DATA

## Depth of cure

COLOR PASTE	CLEAR LIQUID
0.1mm or more	1.0mm or more

## Standard light curing time for dental lab light curing unit

Dental light curing unit	SOLIDILITE V
Curing	1 min.

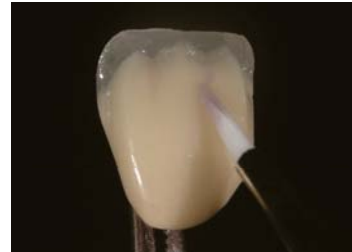
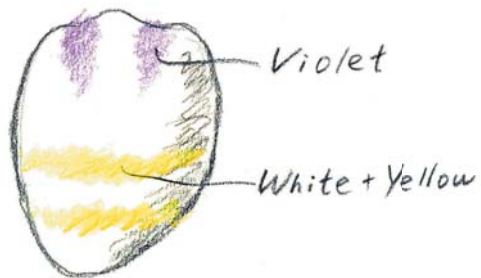
**Note :** LITE ART can be cured in all light curing units recommended by SHOFU. In order to guarantee a perfect light curing of LITE ART pastes, take care that the restoration is placed at an optimal position to the beam of the light curing. Please consider the corresponding manufacturer's instructions when operating any light curing devices.

## 6-5 Examples for use

## Expression of transparent for incisal part

## Illustration 1:

To intensify the translucency of the Incisal area and to adjust the light reflection, Violet can be thinly applied. To create white or bright bands or in decalcification areas, White and Yellow can be used individually or mixed with a brush on the body.



## Expression of gingival shade

## Illustration 2:

Fine adjustments for reddish gum effects of implant structures can be achieved by using Red, Violet, Magenta and mixed individual gingival colors.

