



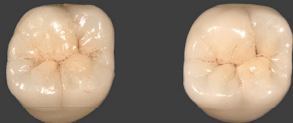
# VINTAGE MP Uni-Layer

## STEP CARD



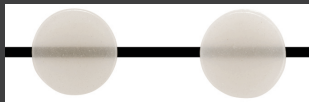
Uni-Layer porcelain is for making PFM crowns in just one layer. Using "VINTAGE MP" Paste Opaque and "VINTAGE Art" Stain enable precise VITA\* Classical shade reproduction. \*VITA is a registered trademark of VITA Zahnfabrik, Bad Säckingen, Germany

### Compare translucence



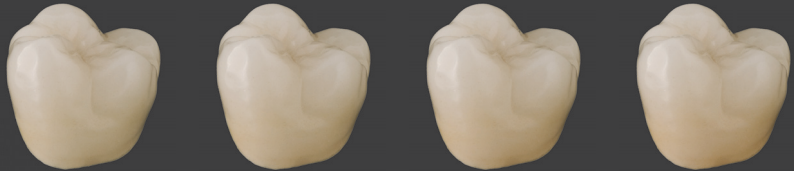
**HT**  
High translucent

**LT**  
Low translucent



Depending on the case,  
select HT or LT translucence.

### Shade reproduction



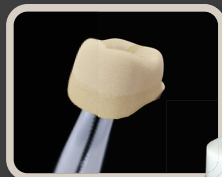
A1

A2

A3

A3.5

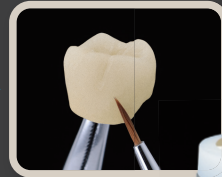
Utilizing "VINTAGE MP" Paste Opaque corresponding to the shade enables an accurate shade match. Shade adjustment can be performed using "VINTAGE Art".



Paste Opaque



Uni-Layer Build up



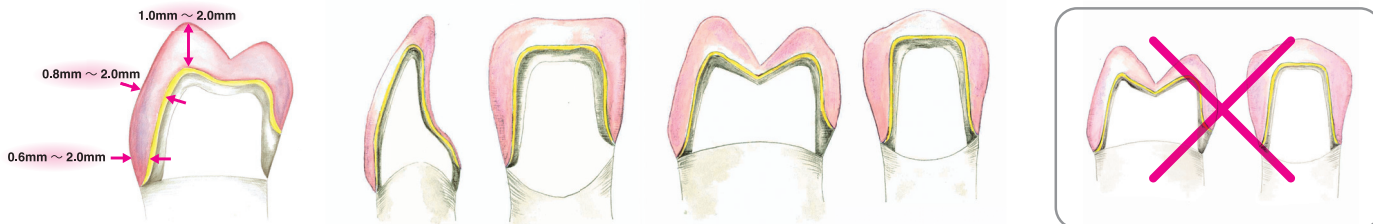
Staining



Finishing

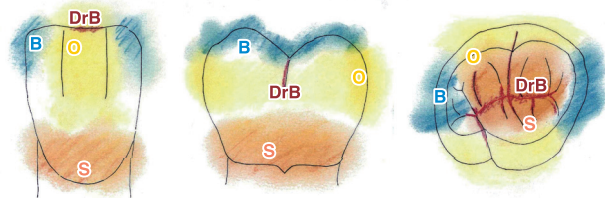
## Porcelain thickness & Frame design

Layering Porcelain 0.6mm - 2.0mm



The frame is designed considering the support of the occlusal force and the thickness of porcelain layer. If the porcelain layer is too thick, it can cause fractures.

## Example Staining



Shade A(S) : Adjusting the chroma of color to the depth of color

Blue(B) : Adjust translucence

Orange(O) : Apply Orange occlusal surface

Dark red brown(DrB) : Fissure

## Firing schedule

	Type of firing	Drying (min)	Heating (°C/min)	Firing (°C)	Holding (min)
MP	Base Opaque	5 ~ 7	50 ~ 60	500°C → 940 ~ 960°C(V)	2
	Shade Opaque	5 ~ 7	50 ~ 60	500°C → 920 ~ 940°C(V)	1 ~ 2
	Uni Layer	5 ~ 7	50 ~ 60	650°C → 900 ~ 920°C(V)	
	Self Glaze	5 ~ 7	50 ~ 60	650°C → 880 ~ 900°C(A)	
Art	characteristic stain	5 ~ 7	50 ~ 60	600°C → 850 ~ 870°C(A)	
	Glazing	5 ~ 7	50 ~ 60	600°C → 880 ~ 900°C(A)	